



# LZF<sup>II</sup>

**AUTOMATED  
EDGED LENS DEBLOCKING SYSTEM**



*Patent application pending*

Specifications	
<b>Model</b>	LZF <sup>II</sup>
<b>Weight</b>	17 lbs.
<b>Height</b>	8.75 in.
<b>Width</b>	8.5 in.
<b>Depth</b>	15 in.
<b>Operating Pressure (Air)</b>	90-100 PSI Filtered and dry air supply
<b>Max Pressure</b>	110 PSI (7.6 BAR)



Regulator  
Controls Lens Clamp  
(90psi recommended)

Lens Clamp

**Operation 3**  
Rotation Push Button

Filter Regulator  
Controls Edging Block  
Clamp and Rotation  
(90psi recommended)

Edging Block  
Clamp

**Operation 1**  
Edging Block  
Clamp Toggle  
Switch

**Operation 2**  
Lens Clamp  
Toggle Switch



## Installation Instructions

***Congratulations on your purchase of the LZF<sup>II</sup>. To enhance the value of your purchase, please read these instructions. To view a video of the LZF<sup>II</sup> in action go to the link on our web site @:***

***[http://www.precisiontooltech.com/section5\\_lzfII\\_edging\\_deblocker.htm](http://www.precisiontooltech.com/section5_lzfII_edging_deblocker.htm) or  
<http://www.youtube.com/watch?v=901WYEqwgtM&feature=email>***

1. LZFII comes specially packaged for protection during shipping. Retain packaging for future shipping.
2. The unit can be set up anywhere in your lab where there is a filtered / dry air supply.
3. The recommended pressure for the filter regulator that controls the Edging Block Collet and Rotation is 90 psi. If the unit seems like it runs out of power during the clamp or twist the air pressure can be increased to 90-100 psi.
4. The recommended pressure for the regulator that controls the Lens Arm Clamp and rotation is 90 psi. If the Lens Arm Clamps are forced apart when the lenses are rotated the air pressure should be increased between 90-100 psi.
5. The LZFII is designed to work with all Precision Edging blocks including whole, half-eyes and ovals. Any other style edging blocks may not be durable enough to work in this unit.
6. Review your pad manufacturer's recommendations for their lens application. The use of hydrophobic style pads on CR-39 lenses is **NOT recommended** with this machine.
7. **When wet edging make sure the lenses are dry prior to inserting them into the LZFII. Excessive amounts of water can cause damage to the LZFII.**

## Operation Instructions

1. Insert either 1 or 2 blocked lenses into the edging block clamps.
2. Flip the edging block clamp toggle switch #1. The clamps will close to secure the blocked lenses in the machine.
3. Flip the lens clamp toggle switch #2. The clamp arms will move toward the lenses.
4. Press the rotation push button #3. The edging block clamp will rotate and break the adhesion between the lenses and leap pad.
5. Flip the lens clamp toggle switch #2. The clamp arms will move away from the lenses.
6. Remove the lenses.
7. Peel the leap pad off of the edging blocks (**while the block is still clamped**).
8. Flip the edging block clamp toggle switch #1. The clamps will open releasing the edging blocks.
9. Remove the edging blocks.

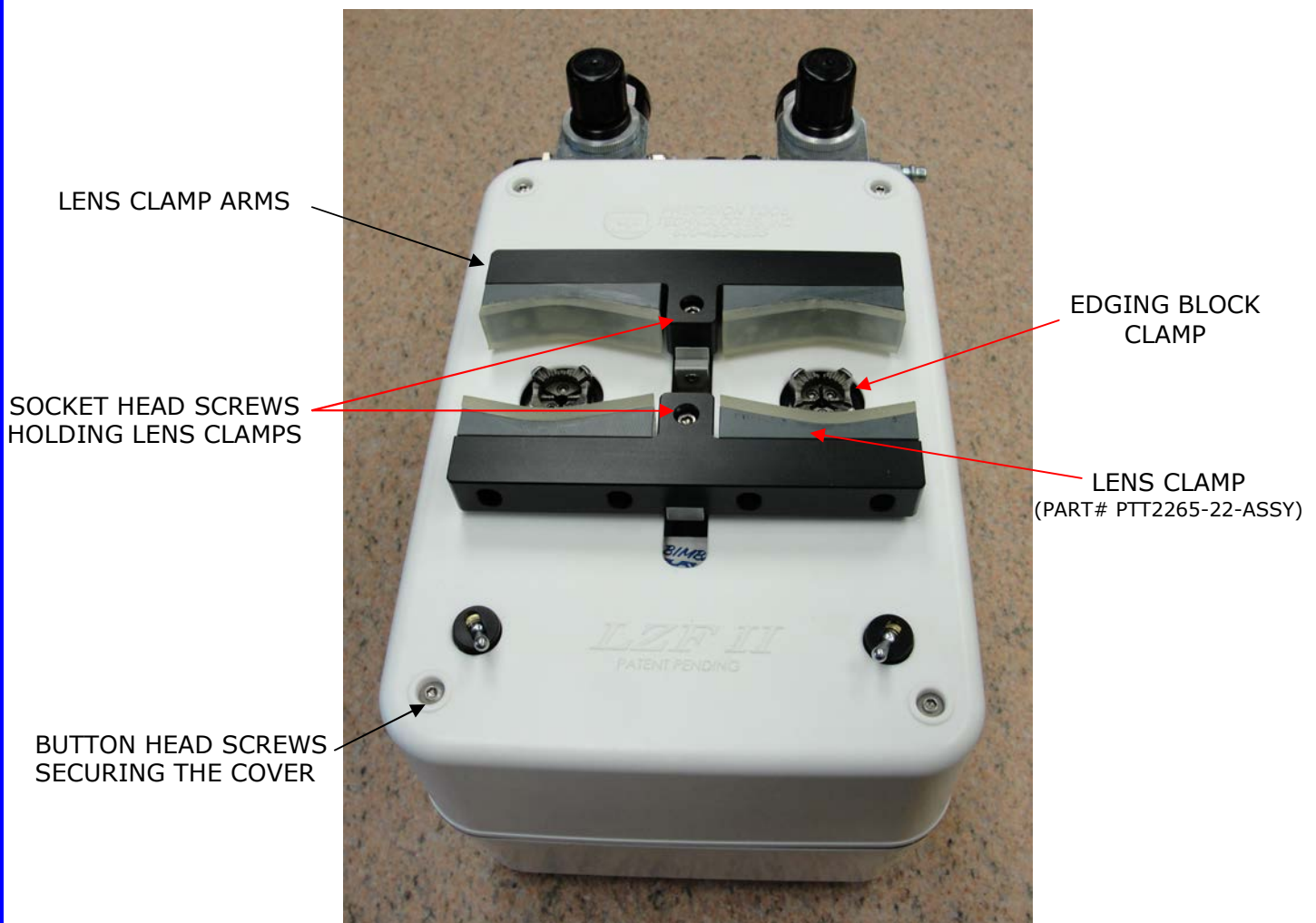
**Note: The air filter may make noise from time to time as it automatically purges moisture from the filter bowl.**

## Maintenance

1. It is very important to keep the edging block clamp clean. Any particles in the clamp may not allow the edging block to seat properly.
2. The edging block clamp must be lubricated periodically (follow the directions below). We recommend **a minimum of two times per month**.
3. Lens clamp pads should be rotated/replaced when large gouges become noticeable.

## Edging Block Clamp Lubrication

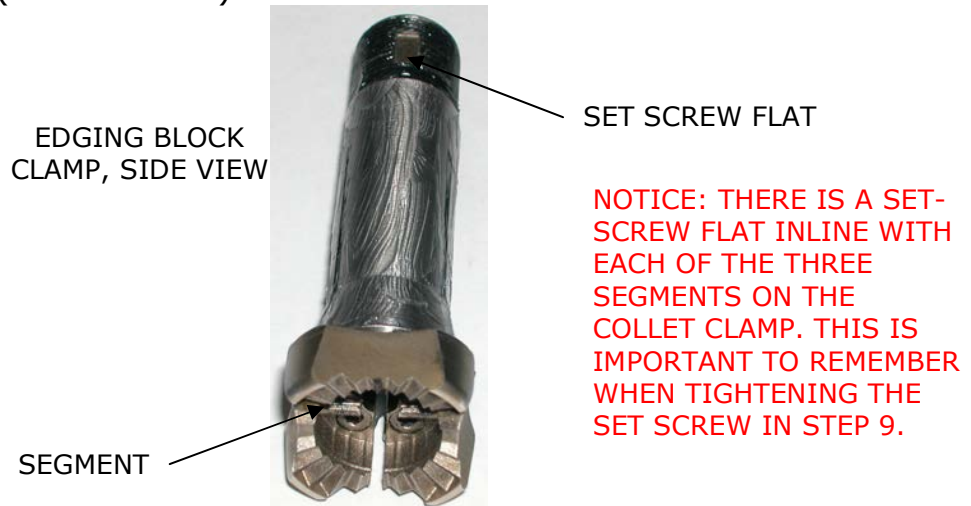
1. Disconnect the air line from the LZFII.
2. Push the lens clamp arms together. Remove the two socket head screws that hold the lens clamp arms to the unit. Remove the clamp arms.



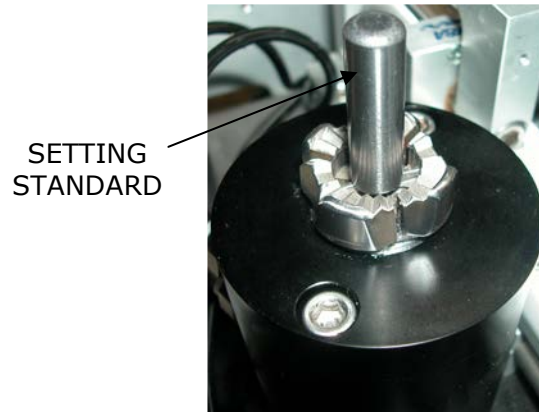
3. Remove the four button head screws that hold the upper cover on the unit. Lift off the cover and set aside.



4. Loosen the single set screw (1/8" Allen wrench) in the collet closer (see picture above). Next, grab the top of the edging block clamp and unscrew counter clockwise.
5. Wipe all the lubricant off of the edging block clamp and the collet closer sleeve with a paper towel.
6. Reapply a light film of *Super Lube* grease over the entire surface of the edging clamp (shown below).



**Notice that the set screw flats are centered on each of the segments on the edging block clamp. This is very important to know when tightening the set screw because if the set screw doesn't hit the flat it will ruin the threads on the edging block clamp resulting in possible machine failure.**



7. Insert the setting standard into the center hole in the edging block clamp. Thread the edging block clamp back into the collet closer until the clamp makes contact with the setting standard. Back off to the closest set screw flat.
8. Tighten the set screw in the collet closer. It is important that the set screw hits the flat on the edging block clamp body. Slightly wiggle the clamp back and forth while you tighten the set screw. You should be able to feel the set screw hit the flat. Tighten the set screw until there is only a slight bit of wiggle left in the edging block clamp. It may be easier to tighten the set screw until it is tight and back off the screw until there is a slight bit of wiggle.
9. Attach the air supply and flip the collet clamp switch. Pay close attention to the collet clamp. If it doesn't clamp, the set screw is probably too tight. Loosen and test again.
10. Repeat steps 4-9 for the left side clamp.
11. Place the cover back on the unit. Replace the four button head screws that hold the upper cover on the unit.
12. Replace the two socket head screws holding the lens clamp arms to the unit.
13. Attach the air supply and resume use.



PRECISION TOOL  
TECHNOLOGIES, INC.



1-800-450-8665

## COMPANY INFORMATION

**Telephone Numbers:** (320)-632-5320  
(800)-450-8665 (Toll Free for U.S. Only)

**Fax Number:** (800)-450-8665 or (320)-632-5452

**E-Mail Address:** [sales@precisiontooltech.com](mailto:sales@precisiontooltech.com)

**Website:** [www.precisiontooltech.com](http://www.precisiontooltech.com)

**Mailing Address:** P.O. Box 56  
Little Falls, MN 56345

### **Annual Maintenance Service Plan \$599.00**

Precision Tool Technologies now offers an Annual Maintenance Service Plan for our LZFI Automatic Deblocking Unit. The Maintenance Service Plan covers the following:

1. Free LZFII loaner unit to use while your unit is being serviced.
2. Inspection of all parts.
3. Lubrication and adjustment of collets.
4. Clean the unit.
5. Install any new upgraded parts.
6. Provide detail quote of parts and labor estimates for any parts that are recommended to be replaced due to wear and tear of the unit.

\*LZFI comes specially packaged for protection during shipping. Retain packaging for future shipping.

#### **FOR REPAIRS; PLEASE SHIP TO THE FOLLOWING LOCATION:**

Precision Tool Technologies, Inc.  
924 Wright Street  
Brainerd, MN 56401



**PRECISION TOOL  
TECHNOLOGIES, INC.**



**1-800-450-8665**